

# XCF3812K 平衡重式叉车 Forklift

## 技术规格书

Basic technical specification



载荷中心：1200mm

Load center: 1200mm

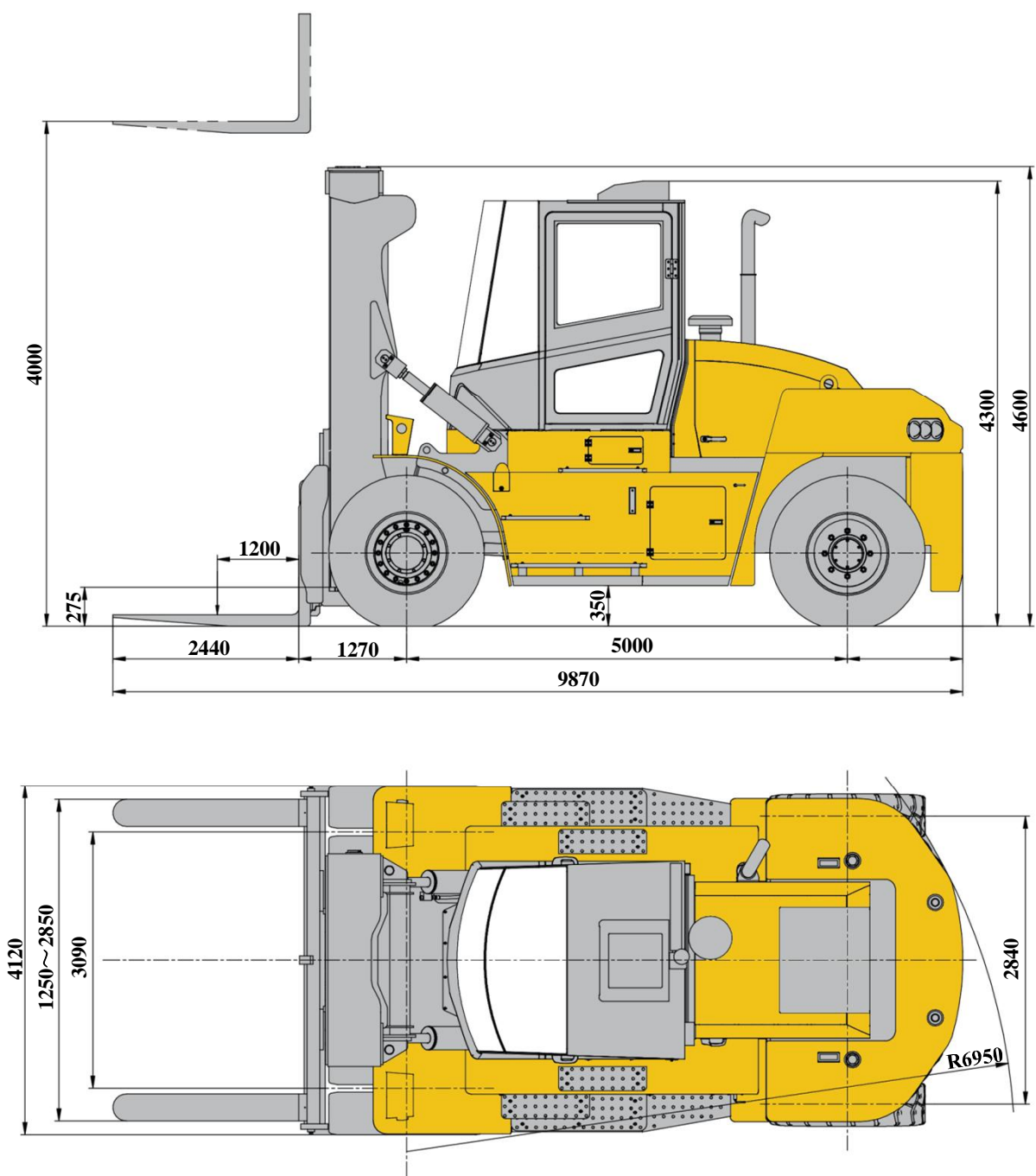


## 目录 Contents

### 目录 Contents

尺寸参数 Dimensions	3
技术规格 Technical specifications	4-5
重量/作业速度 Weight / Working speeds	6
起重能力 Lifting capacity	7
注意事项 Notes	8

尺寸参数  
Dimensions



产品型号 Product model	货叉长度 A/mm	载荷中心 D/mm	整机长度 L1/mm
XCF3812K	2440	1200	9870

技术规格  
Technical specifications

标准配置	
司机室	驾驶、操纵一体化设计，外观简洁、动感。全景式、低仪表台设计，视野开阔。人机工程设计的内部空间，宽阔舒适。配置大屏幕显示器，使用方便。电动辅助液压驱动倾翻系统使得内部维修方便快捷。
发动机	Cummins QSM11，直列六缸水冷电控柴油增压发动机。 额定功率：250kW/2100r/min，最大扭矩：1674Nm/1400r/min。 发动机排放：非道路三阶段、U.S.EPA Tier3、EU Stage IIIA。
变速箱	美国 Dana TE系列自动变速箱（手自一体），5个前进档，3个后退档。变速控制阀为比例控制阀易于操纵，变速操纵、微动阀控制采用电子控制，使叉车的行驶及重载微动控制更加精准。
驱动桥	德国Kessler重载驱动桥，型号Kessler D102湿式多片行走制动器，系统全封闭免维护，充裕应对繁重工况，可靠性高、维护简便。
轮胎	6个18.00-25斜交轮胎，承载力大、专用的重型叉车花纹，适合平衡重式叉车产品各种使用工况。
悬挂	前桥与车架刚性连接，带载行驶稳定性高；后桥与车架摆动铰接，行驶时，后桥可通过铰接机构实现减震功能，缓和路面冲击。
制动	行车制动：湿式盘式制动器，充裕应对长时间高强度繁重作业工况。 驻车制动：弹簧制动，液压解除的独立盘式制动器，作用于前桥。
转向	转向桥全液压动力转向，转向轻便可靠。最小转弯半径7518mm。

空调	大功率、全自动冷暖空调。
液压系统	变量泵负载敏感液压系统，既保证装卸作业时快速提升要求，又从源头减少发动机的持续负载，真正高效节能。液压系统元件采用国际知名品牌产品，成熟稳定。
电气系统	24V DC，负极搭铁，2个蓄电池，照明系统中设置有前大灯，倒车灯、转向灯等。采用CAN-BUS 总线控制系统，稳定安全。高清彩屏显示设备运行参数，显示全面、操作便捷。故障显示器和方便的诊断仪接口，大大简化维修和保养。
车架	车架采用细晶粒高强度钢焊接而成，抗扭转大截面框架结构，承载能力强。设计过程中运用有限元分析计算、零阶设计优化方法对核心结构进行优化设计，保证了结构件的强度和刚度。
门架	宽视野伸缩门架，采用抗扭曲设计，作业性能好、抗扭能力强、操作视野开阔。
货叉	高强度锻造货叉。侧移调距叉，货叉移动由油缸驱动，具有侧移调距的功能。

选装配置	
倒车影像	通过装在车辆后方的摄像头，可在司机室内显示屏上看到车辆后部影像。
倒车雷达	通过装在车辆后方的传感器，可以在车辆后方存在障碍时进行报警。
称重系统	通过检测液压压力的方法进行载荷的测量。
行驶OPS	操作人员离开座位时，整车自动断开动力，无行驶动作。
起升OPS	门架OPS操作人员离开座位时，门架无动作。

产品各部件明细如上所述，具体部件明细请参照产品报价单。

## 技术规格

## Technical specifications

### Standard equipment

<b>Cab</b>	The integrated design of driving and operating functions makes the appearance simple and dynamic. Panoramic, low Instrument panel and Ergonomically designed inner space bring wide field of vision and comfortable experience. Equipped with large screen display, the machine is easy to use. The electric auxiliary hydraulic drive tipping system makes the internal maintenance convenient and fast.
<b>Engine</b>	QSM11, in line six-cylinder water-cooled turbocharged electric-control diesel engine, manufactured by Cummins; Rated power 250kW/2100r/min max. torque 1674Nm/1400r/min; Emission compliance: compliant with off-road U.S. EPA Tier 3/EU Stage IIIA.
<b>Transmission</b>	TE series automatic transmission (with manual shift) manufactured by DANA America, with 5 forward and 3 reverse gears available. The speed control valve is a proportional control valve, which is easy to operate. the speed control and micro valve control adopt electronic control is adopted for the micro valve control, which makes the driving and heavy load micro control of forklift more accurate.
<b>Drive axle</b>	D102, German KESSLER heavy duty drive axle, axle. Equipped with a wet multi-disc travel brake, the system is fully enclosed and maintenance-free, which can adequately cope with heavy working conditions and bring high reliability and easy maintenance
<b>Tires</b>	6 diagonal tires, with large bearing capacity and special heavy forklift pattern, are suitable for various working conditions of counterweight forklift products. Tire specifications: 18.00-25.
<b>Suspensions</b>	Front axle is rigidly connected with frame for high stability while driving with a container suspended; rear axle is hinged with frame for buffering road shock through the hinged mechanism.
<b>Brakes</b>	Service brake: wet disc brake, acting on the front wheels. Automatic braking is available in case of lower system pressure. Parking brake: spring-loaded brake and hydraulic-released independent disc brake, acting on the front axle.
<b>Steering</b>	Rear axle full hydraulic power steering, steering light and reliable. The minimum turning radius is 7518mm

<b>Air conditioner</b>	High power, automatic cooling and heating air conditioning
<b>Hydraulic system</b>	The load sensitive hydraulic system of variable pump not only ensures the rapid lifting requirements during loading and unloading operation, but also reduces the continuous load of engine from the source, which is truly efficient and energy-saving. Adopted international famous brand products, the components of system are mature and stable.
<b>Electric system</b>	DC 24 V, negative ground, 2 batteries. There are headlamps, reverse lamp and turn lamps available in lighting system. Due to the CAN-BUS bus control, the system is stable and safe. Fault display and convenient diagnostic instrument socket greatly simplify the repair and maintenance
<b>Frame</b>	Frame is made of fine grain high tension steel, with anti-torsion large cross-section, strong carrying capacity. Finite element analysis and zero order design optimization method adopted for key structures ensure the strength and stiffness of structural members.
<b>Mast</b>	The telescopic mast with wide field of vision adopts anti twist design, which has good operation performance, strong anti twist ability and excellent vision
<b>Fork</b>	High strength forged fork. Side shift distance fork, fork movement is driven by oil cylinder, with the function of side shift adjusting distance.

### Additional equipment

<b>Reverse image</b>	The rear HD image can be seen on the driver's indoor display through the camera mounted on the rear of the vehicle
<b>Reversing radar</b>	The sensor installed at the rear of the vehicle will alarm when there is an obstacle behind it
<b>Weighing system</b>	The load is measured by detecting the hydraulic pressure
<b>Driving OPS</b>	The vehicle will automatically cut off the power without driving action, when the operator leaves the seat
<b>Lifting OPS</b>	When the OPS operator of the mast leaves the seat, the mast does not move

The details of each component of the product are described above, for more details, please refer to the product quotation.

## 重量 Weight

车辆型号 Product Model	项目 Item	前轴 Front Axle	后轴 Rear Axle	总重量 Total weight
XCF3812K	空载 Unloaded	23200kg	28380kg	51600kg
	满载 Rated load	79500kg	10100kg	89600kg

轴荷为门架处于垂直状态时的数值。

The axle loads listed in the table are the values when mast is vertical.

## 作业速度 Working speeds

项目 Item	空载 Unloaded	满载 Rated load
起升速度 Lifting speed	340mm/s	280mm/s
下落速度 Lowering speed	300mm/s	300mm/s
行驶速度 Traveling speed	26km/h	23km/h

## 货叉规格 Fork Specifications

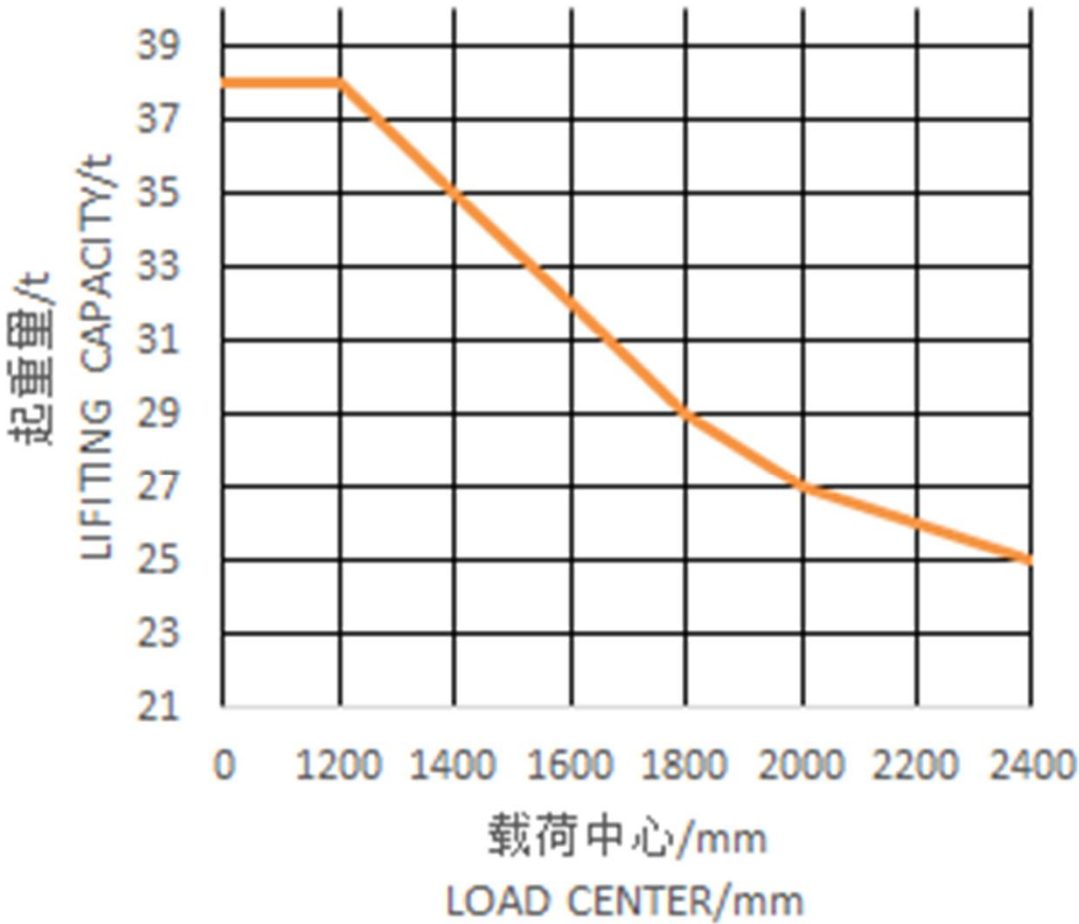
项目 Item	XCF3812K
长 Length	2440mm
宽 Width	300mm
高 Height	145mm

起重能力

Lifting capacities

产品型号 Product Model	额定起重量 Rated Lifting Capacity	载荷中心 Load Center	最大起升高度 Max. Lifting Height
XCF3812K	38000kg	1200mm	4000mm

XCF3812K载荷曲线



## 主要技术参数

### Main Technical Data

序号 No	项目 Item		单位 Units	参数 Parameters
				XCF3812K
1	额定起重量 Rated lifting capacity		kg	38000
2	全长 Overall length		mm	9870
3	全宽 Overall width	车轮宽 Width(wheel)	mm	4120
4		车架宽 Width(frame)	mm	4120
5	全高 Overall high	不起升门架高度 Min. mast height	mm	4600
6		司机室高度 Cab height	mm	4300
7		作业时最大高度 Max. mast height	mm	6600
8	轴距 Wheelbase		mm	5000
9	前悬距 Front overhang		mm	1270
10	前轮距 Track(front)		mm	3090
11	后轮距 Track(rear)		mm	2840
12	最小离地间隙 Min. ground clearance	门架下端 Under mast(unloaded/rated load)	mm	275
13		车架中部 Middle of truck(unloaded/rated load)	mm	350
14	无载最大起升高度 Max. lifting height		mm	4000
15	门架倾角(前/后) Mast tilting(forwards/backwards)		(°)	6/10
16	自重 Dead weight		kg	51600
17	无载最大起升速度 Max. lifting speed(unloaded)		mm/s	340
18	满载最大起升速度 Max. lifting speed(rated load)		mm/s	280
19	无载最大下落速度 Max. lowering speed(unloaded)		mm/s	300
20	满载最大下落速度 Max. lowering speed(rated load)		mm/s	300
21	最小转弯半径 Min. turning radius		mm	6950
22	无载最大运行速度 Travelling speed(unloaded)		km/h	26
23	满载最大运行速度 Travelling speed(rated load)		km/h	23
24	满载最大爬坡度 Max.grade-ability		%	30
25	满载最大牵引力 Max. drawbar pull(rated load)		kN	275

## 主要配套件明细表

### Main parts list

序号 N0.	名 称 Name	型 号 Model	厂 家 Manufacturer
1	发动机 Engine	QSM11	康明斯 Cummins
2	变速箱 Transmission	TE30	美国 Dana America Dana
3	驱动轴 Drive Axle	Kessler D102	德国 Kessler Germany Kessler
4	轮胎 Tire	18.00-25	杭州中策橡胶有限公司 Hongzhou Zhongce Rubber Co.,Ltd
5	司机室 Cab	XCF1606K.03	徐州徐工港口机械有限公司 Xuzhou XCMG Port Machinery Co.,Ltd
6	主泵 Main Pump	P105	美国派克 America Paker
7	主阀 Main Valve	M402	美国派克 America Paker



地址：江苏省徐州市诚意路99号

Add : No. 99 Chengyi Road, Xuzhou, Jiangsu, China

电话(Tel) : +86-516-82808188

质量监督电话(Quality Inquiry Tel) : 0516-82808221

备件电话(Spare Parts Tel) : 0516-82808188

邮编(Post Code) : 221137

网址(Web) : <http://www.xcmg.com/xggj>

服务热线 Service Tel

**400-110-9999**

**400-001-5678**



本印刷品不属于合同。出于产品不断改进的需要，我们保留对产品型号、参数、配置进行变更的权利，恕不另行通知。图片仅供参考，具体产品以实物为准。图片中产品可能并非标准配置，部分部件可能需要另行购置。办理牌照和上路行驶需遵守当地法规。

This print does not belong to the contract. We reserve the right to modify the design (such as product model, parameters and configuration) without notice for improvement. The pictures are just for reference. The product in the picture may not be standard configuration. Some parts need to be purchased separately. Conform to the local laws for license application and road traveling.

XCMG—XCF3812K