



6.0-7.0t

Peacock Series Electric Counterbalanced Forklifts

SOLID TO SUCCEED



Address: No. 88, GuangDe Road, Development Zone, Xuzhou, Jiangsu, China

Postal code: 221004

Phone No.: 0516-87560299

Website: www.ccxcmg.com



XCMG forklift official website



"King of Forklift/Loader" micro mall



XCMG forklift WeChat official account

Nationwide unified customer service hotline: 400-110-9999



 **XCMG Special Construction Machinery Co., Ltd.**

Leads the electric forklift industry into
the era of high performance



High performance

High performance#High energy consumption
High performance#High heat
High performance#Reduced safety



All-weather

Protection level: IP65
No fear of
Raining and wading
Highland, cold storage



High flexibility

High voltage
National standard charging gun
Small turning radius



Comfort

Fully suspended shock-absorbing seats
Large room for head and foot
Ergonomic design



High safety

Automotive-grade lithium battery pack
A complete OPS system
Automatic holding+
Slow Slipping Function



Long range

Three electric liquid cooling
Full charge in 1 hour



Liquid cooling era XCMG



High performance

Equipped with the unique XEC electronic control technology of XCMG, it effectively matches the working conditions in segments and works with the permanent magnet synchronous motor, so that the energy consumption of the whole vehicle is still better than that of some vehicles with double-15 performance, even though the performance exceeds that of the double-20.



XCMG motor, electronic control and battery system are equipped with liquid cooling system, which ensures the whole vehicle to work for a long time through appropriate internal cooling matching.



PES 3-speed a new speed followed steering function is added, which makes the steering wheel light when steering on the spot and more secure when driving at high speeds.

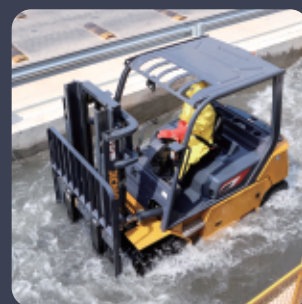
All-weather

The protection level of electrical parts and components of the Peacock series is IP65.



Rain test

Heavy-rainfall rain test for 15 minutes. Intact for the whole vehicle. Continuous and stable operation.



Wading test

Continuous driving in 500mm-deep pool for 15 minutes. Intact for the whole vehicle. Continuous and stable operation.



Highland test

4,500 metres above the sea level. Ambient temperature: -20°C. 5-Day continuous test for the whole vehicle driving and lift. Intact for the whole vehicle. Continuous and stable operation.



Cold storage test

Continuous parking at -30°C for 12 hours and intermittent operation in cold storage for 6 hours. Intact for the whole vehicle. Continuous and stable operation.

High flexibility, Comfort

Peacock series adopts high voltage battery pack and national standard charging gun. Completely interchangeable with car charging post.



Integral overhead guard with shock absorbing arrangement. Guarantee the driver's comfort. Plenty of head and foot space.



The car is equipped with a large car handle, Ratcheting hand brake, Cup holder, Cell phone holder, USB interface, Color screen instruments, etc. A number of buttons are reserved for the expansion of the later configuration functions. The rear has increased a number of storage devices to ensure the humanization for the operation.

High ground clearance with small turning radius can adapt to more working conditions.



Safety and Intelligence

XCMG Guardian

High safety

Automotive-grade lithium battery pack With triple safety protection as follows:

MSD function

In case of maintenance or certain leakage emergencies, the circuit can be quickly separated, so that the voltage level of the battery system is in a safe state to avoid electric shock. The MSD is also equipped with a fuse to protect against short circuit and overload.



Main positive and negative line relays for charging and discharging

Inside the PDU control box, there are separate main positive and negative line relays for charging and discharging the main positive line and auxiliary discharging line are also equipped with fuses to protect against short circuit and overload.

Voltage interlock

All components and wiring harness connectors of the whole vehicle must be installed in place. When they are not connected or not connected in place, the BMS cuts off the voltage circuit, and the voltage of the conductive part that can be touched by human body is cut off.

Steep hill descent

Full set of OPS ramp control, which ensures the safety of people and goods in 360°. Release the pedal on the ramp, and it will start to back up slowly after 3-5 seconds of automatic parking.

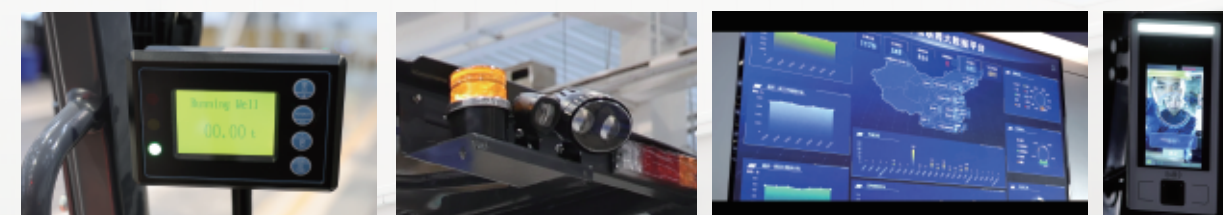


Long battery life + fast charging

Wide range of battery capacity options Standard with three electric liquid cooling for a long time of work Extremely fast charging to ensure a full charge in 1 hour

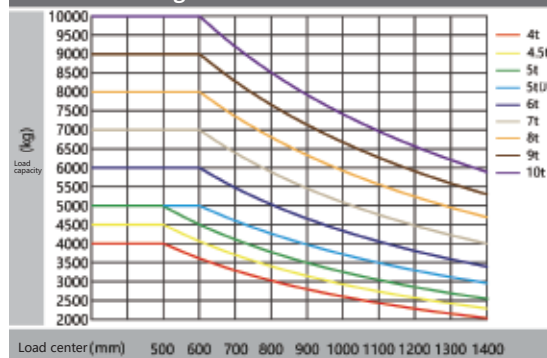
High Intelligence

Peacock Series can be equipped with a complete high intelligence management suite, including industrial vehicle management platform, advanced driver assistance system, driver behavior analysis and driver identification;



Load curve diagram

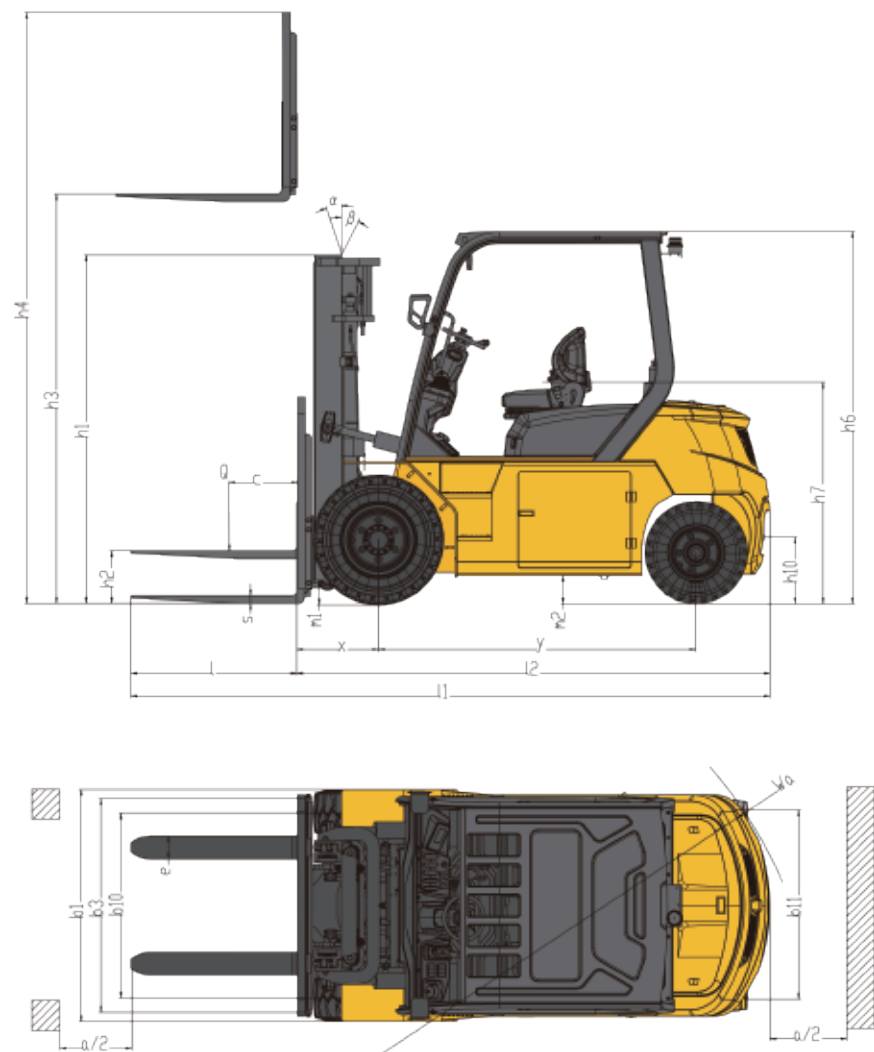
Load curve diagram



Note:

The vertical axis shows the load capacity and the horizontal axis shows the load center. The load center is calculated from the front of the forks. The base point of a standard load is the center of a cube with a load side length of 1,200 mm. When the mast is tilted forward, non-standard forks are used, or loads exceeding the normal width are loaded, the load capacity will be reduced. By means of the load curve diagram, the load capacity of a standard mast at various load centers can be readily understood.

Structure diagram



Technical data

Characterization	1.1	The manufacturer		XCMG	
	1.2	Model		XVB	
	1.2a	Configuration No.		60-QL8-G	70-QL8-G
	1.3	Power type		Lithium batteries	Lithium batteries
	1.4	Operating method		Seat type	Seat type
	1.5	Rated lift capacity	Q(kg)	6000	7000
	1.6	Load center distance	c(mm)	600	600
	1.8	Front overhang distance	x(mm)	575	580
	1.9	Wheel base	y(mm)	2250	2250
Weight	2.1	Deadweight (with battery)	(kg)	9100	9900
	2.2	Bridge full load, front/rear	(kg)	13097/2003	14664/2236
	2.3	Bridge no loaded, front/rear	(kg)	4270/4830	4366/5534
Wheel	3.1	Tire type, front/rear		Pneumatic tire/pneumatic tire	Pneumatic tire/pneumatic tire
	3.2	Tire size, front		8.25-15-14PR	8.25-15-14PR
	3.3	Tire size, rear		8.25-15-14PR	8.25-15-14PR
	3.5	Number of wheels, front/rear (x=sprocket)		4x/2	4x/2
	3.6	Track front	b10(mm)	1474	1474
	3.7	Track rear	b11(mm)	1526	1526
Dimensions	4.1	Mast inclination, front/rear	$\alpha/\beta(^{\circ})$	6/12	6/12
	4.2	Mast retraction height	h1(mm)	2480	2480
	4.3	Free lift height	h2(mm)	160	165
	4.4	Lift height	h3(mm)	3000	3000
	4.5	Max. height during operation (with load backrest)	h4(mm)	4400	4400
	4.7	Height of overhead guard	h6(mm)	2400	2400
	4.8	Seat SIP point height, to the floor	h7(mm)	1400	1400
	4.12	Traction pin height	h10(mm)	610	610
	4.19	Overall length (with forks)	l1(mm)	4660	4665
	4.20	Overall length (without forks)	l2(mm)	3440	3445
	4.21	Overall width	b1(mm)	2000	2000
	4.22	Fork dimensions (thickness/width/length)	s/e/l(mm)	60/150/1220	65/150/1220
	4.23	Fork carriage, ISO2328		4A	4A
	4.24	Width of forks carriage	b3(mm)	1800	1800
	4.31	Ground clearance at mast, full load	m1(mm)	180	180
	4.32	Ground clearance at wheel base center, full load	m2(mm)	180	180
	4.33	Right-angle stacking aisle width, pallet 1,000 x 1,200 placement across forks	Ast(mm)	4925	4930
	4.34	Right-angle stacking aisle width, pallet 800 x 1,200 placement along the forks	Ast(mm)	5125	5130
	4.35	Outside turning radius	Wa	3150	3150
Performance	5.1	Travel speed, Full/no load	(km/h)	21/23	21/23
	5.2	Hoisting speed, Full/no load	(m/s)	0.4/0.46	0.38/0.46
	5.3	Descent speed, Full/no load	(m/s)	0.45/0.5	0.45/0.5
	5.6	Max. traction, Full	(N)	32000	32000
	5.8	Max. grade ability, Full/no load	(%)	22/25	20/25
	5.9	Acceleration time (10 meters), Full/no load	(s)	4.5/4.2	4.5/4.2
	5.10	Service brake/parking brake		Hydraulic/mechanical	Hydraulic/mechanical
Others	6.1	Traction motor power, S2-60min working system	(kW)	35	35
	6.2	Lift motor power, S3-15% working system	(kW)	40.5	40.5
	6.4	Battery capacity	(V/Ah)	309/202	309/202
	6.5	Battery weight ($\pm 5\%$)	(kg)	600	600
	7.1	Controller type		IGBT/AC	IGBT/AC
	7.2	Working pressure	(Mpa)	21	21

With the advancement of technology, product structures, parameters, etc. will be continuously improved without further notice. In case of discrepancy between the sample information and the substance, the substance shall prevail.

Mast parameters

Basic mast with wide view field					
Mast model	Max. lift height (mm)	Full height of mast (forks on the ground, vertical mast) (mm)	Free lift height (with load backrest) (mm)	Max. height during operation (with load backrest) (mm)	Mast inclination α/β(°)
		6/7t	6/7t	6/7t	
M250	2500	2230	165	3900	6/12
M300	3000	2480	165	4400	6/12
M330	3300	2630	165	4700	6/12
M350	3500	2730	165	4900	6/12
M375	3750	2855	165	5150	6/12
M400	4000	3030	165	5400	6/12
M425	4250	3155	165	5650	6/12
M450	4500	3280	165	5900	6/12
M475	4750	3405	165	6150	6/6
M500	5000	3530	165	6400	6/6
M550	5500	3830	165	6900	6/6
M600	6000	4080	165	7400	6/6

Wide view field two-stage full free mast					
Mast model	Max. lift height (mm)	Full height of mast (forks on the ground, vertical mast) (mm)	Free lift height (with load backrest) (mm)	Max. height during operation (with load backrest) (mm)	Mast inclination α/β(°)
		6/7t	6/7t	6/7t	
F250	2500	2230	880	3880	6/12
F300	3000	2480	1130	4380	6/12
F330	3300	2630	1280	4680	6/12
F350	3500	2730	1380	4880	6/12
F375	3750	2855	1505	5130	6/12
F400	4000	3030	1680	5380	6/12

6/7t: the free lift height increases by 405mm without load backrest

Wide view field three-stage full free mast					
Mast model	Max. lift height (mm)	Full height of mast (forks on the ground, vertical mast) (mm)	Free lift height (with load backrest) (mm)	Max. height during operation (with load backrest) (mm)	Mast inclination α/β(°)
		6/7t	6/7t	6/7t	
T360	3600	2335	985	4990	6/6
T400	4000	2470	1120	5390	6/6
T435	4350	2585	1235	5736	6/6
T450	4500	2635	1285	5886	6/6
T470	4700	/	/	/	/
T480	4800	2740	1390	6200	6/6
T500	5000	2805	1460	6400	6/6
T540	5400	2940	1590	6800	6/6
T600	6000	3140	1790	7400	6/6
T650	6500	3405	2055	7900	6/6
T700	7000	3515	2165	8400	6/6

6/7t: the free lift height increases by 405mm without load backrest

Loading capacity

Loading capacity of two-stage mast:6t, 7t				
Mast model	Max. lift height (mm)	Front wheel type	Loading capacity of the whole vehicle (kg) (6t/7t: 600mmload center)	
			6t	7t
M250/F250	2500	Standard	6000	7000
M300/F300	3000	Standard	6000	7000
M330/F330	3300	Standard	6000	7000
M350/F350	3500	Standard	6000	7000
M375/F375	3750	Standard	6000	7000
M400/F400	4000	Standard	6000	7000
M425	4250	Standard	6000	7000
M450	4500	Standard	6000	7000
M475	4750	Standard Dual tires	6000	7000
M500	5000	Standard Dual tires	6000	7000
M550	5500	Standard Dual tires	5800	6800
M600	6000	Standard Dual tires	5500	6500

Loading capacity of three-stage mast:6t, 7t				
Mast model	Max. lift height (mm)		Loading capacity of the whole vehicle (kg) (6t/7t: 600mmload center)	
			6t	7t
T360	3600	Standard	5800	6500
T400	4000	Standard	5800	6500
T435	4350	Standard	5800	6500
T450	4500	Standard Dual tires	5700	6400
T470	4700	Standard Dual tires	5700	6400
T480	4800	Standard Dual tires	5600	6300
T500	5000	Standard Dual tires	5600	6300
T540	5400	Standard Dual tires	5400	6100
T600	6000	Standard Dual tires	5200	5800
T650	6500	Standard Dual tires	5000	5500
T700	7000	Standard Dual tires	4600	5000

Option information

Battery and charger option table (lithium)						
Voltage/capacity	309V150Ah	309V173Ah	309V202Ah	309V228Ah	309V230Ah	309V245.5Ah
6t-7t	--	--	●	○	○	○
Charger standard	750V/100A	750V/100A	750V/100A	750V/100A	750V/100A	750V/100A
Optional charger	750V/200A	750V/200A	750V/200A	750V/200A	750V/200A	750V/200A

Note: ● is standard, ○ is optional.

Option table	
Basic function options	
Pneumatic tires	●
Dual front tires	●
Eco-friendly solid tire	○
Ordinary solid tire	○
M300 Mast	●
Other mast ⁽¹⁾	○
Standard forks ⁽²⁾	○
Non-standard forks	○
Forklift attachment	○
Lithium batteries of all sizes	○
Charger ⁽³⁾	●
Hydraulic function options	
Two multi-way valve	●
Three multi-way valve	○
Four multi-way valve	○
Five multi-way valve	○
Metric thread hydraulic system	●
Comfort function options	
End cushioning function for mast lowering	●
End cushioning function for mast raising	○
Electric fan	○
Steering wheel triggered steering function	○
Synchronized steering function	○
Automatic deceleration function for turning	○
Cab and windshield options	
Integral cab (with fan + wiper)	○
Integral cab + refrigeration air conditioner	○
Integral cab + heater	○
Integral cab + refrigeration air conditioner + heater	○
Front windshield (including wiper)	○
Rear windshield	○
Top windshield	○

Safety function options	
Activation by card	●
Full OPS function (including down OPS)	●
Multi-way valve with overload protection	○
Embedded shock-absorbing seat (including seat switch)	●
Embedded shock-absorbing seat (including seat switch + belt lock)	○
LED beacon lamp	●
LED rotating warning light	○
LED rotating beeping warning light	○
Blue spotlight/red spotlight	○
Blue bar marker lamp/red bar marker lamp	○
Reversing radar	○
Reversing camera (with radar)	○
Reversing voice horn	○
Center rearview mirror	●
Left and right rearview mirrors	○
Left and right rearview mirrors + center rearview mirror	○
1kg fire extinguisher (dry powder)	○
2kg fire extinguisher (carbon dioxide)	○
3kg/4kg fire extinguisher (carbon dioxide)	○
Speeding alarm(8km/h or 10km/h)	○

Note: ●standard, ○optional
(1)For other mast information, please refer to the mast parameter table.;
(2) For standard forks specification, please refer to the technical parameter table.;
(3)For charger specification, please refer to the charger parameter table.