



**SOLID TO SUCCEED**



# 4.0-5.0t

## Peacock Series Electric Counterbalanced Forklifts



Address: No. 88, GuangDe Road, Development Zone, Xuzhou, Jiangsu, China

Postal code: 221004

Phone No.: 0516-87560299

Website: [www.ccxcmg.com](http://www.ccxcmg.com)



XCMG forklift official website



"King of Forklift/Loader" micro mall



XCMG forklift WeChat official account

Nationwide unified customer service hotline: 400-110-9999



XCMG Special Construction Machinery Co., Ltd.



Leads the electric forklift industry into  
the era of high performance

### High performance

High performance=High energy consumption  
High performance=High heat  
High performance=Reduced safety

### All-weather

Protection level: IP65  
No fear of  
Raining and wading  
Highland, cold storage

### High flexibility

High voltage  
National standard charging gun  
Small turning radius

### Comfort

Fully suspended shock-absorbing seats  
Large room for head and foot  
Ergonomic design

### High safety

Automotive-grade lithium battery pack  
A complete OPS system  
Automatic holding+  
Slow Slipping Function

### Long range

Three electric liquid cooling  
Full charge in 1 hour





# Liquid cooling era XCMG



## High performance

Equipped with the unique XEC electronic control technology of XCMG, it effectively matches the working conditions in segments and works with the permanent magnet synchronous motor, so that the energy consumption of the whole vehicle is still better than that of some vehicles with double-15 performance, even though the performance exceeds that of the double-20.



XCMG motor, electronic control and battery system are equipped with liquid cooling system, which ensures the whole vehicle to work for a long time through appropriate internal cooling matching.



PES 3-speed a new speed followed steering function is added, which makes the steering wheel light when steering on the spot and more secure when driving at high speeds.

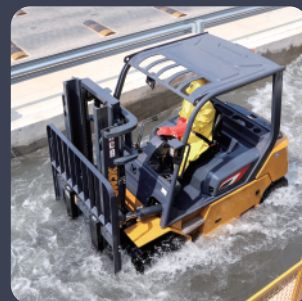
## All-weather

The protection level of electrical parts and components of the Peacock series is IP65.



### Rain test

Heavy-rainfall rain test for 15 minutes. Intact for the whole vehicle. Continuous and stable operation.



### Wading test

Continuous driving in 500mm-deep pool for 15 minutes. Intact for the whole vehicle. Continuous and stable operation.



### Highland test

4,500 metres above the sea level. Ambient temperature: -20°C. 5-Day continuous test for the whole vehicle driving and lift. Intact for the whole vehicle. Continuous and stable operation.



### Cold storage test

Continuous parking at -20°C for 12 hours and intermittent operation in cold storage for 6 hours. Intact for the whole vehicle. Continuous and stable operation.

## High flexibility, Comfort

Peacock series adopts high voltage battery pack and national standard charging gun. Completely interchangeable with car charging post.



Integral overhead guard with shock absorbing arrangement. Guarantee the driver's comfort. Plenty of head and foot space.



The car is equipped with a large car handle Ratcheting hand brake Cup holder, Cell phone holder, USB interface, Color screen instruments, etc. A number of buttons are reserved for the expansion of the later configuration functions. The rear has increased a number of storage devices to ensure the humanization for the operation.

High ground clearance with small turning radius can adapt to more working conditions.





# Safety and Intelligence

## XCMG Guardian

### High safety

Automotive-grade lithium battery pack With triple safety protection as follows:

#### MSD function

In case of maintenance or certain leakage emergencies, the circuit can be quickly separated, so that the voltage level of the battery system is in a safe state to avoid electric shock. The MSD is also equipped with a fuse to protect against short circuit and overload.



#### Main positive and negative line relays for charging and discharging

Inside the PDU control box, there are separate main positive and negative line relays for charging and discharging the main positive line and auxiliary discharging line are also equipped with fuses to protect against short circuit and overload.

#### Voltage interlock

All components and wiring harness connectors of the whole vehicle must be installed in place. When they are not connected or not connected in place, the BMS cuts off the voltage circuit, and the voltage of the conductive part that can be touched by human body is cut off.

#### Steep hill descent

Full set of OPS ramp control, which ensures the safety of people and goods in 360°. Release the pedal on the ramp, and it will start to back up slowly after 3-5 seconds of automatic parking.



### Long battery life + fast charging

Wide range of battery capacity options Standard with three electric liquid cooling for a long time of work Extremely fast charging to ensure a full charge in 1 hour

### High Intelligence

Peacock Series can be equipped with a complete high intelligence management suite, including industrial vehicle management platform, advanced driver assistance system, driver behavior analysis and driver identification;

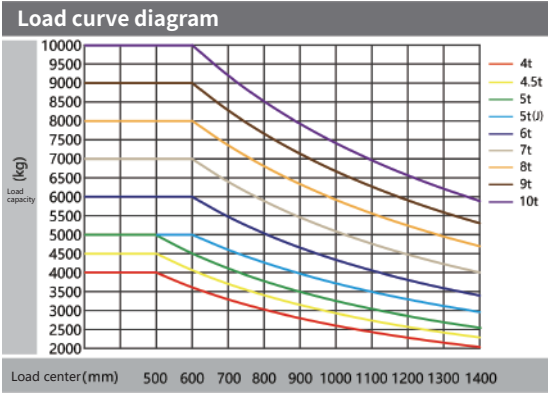




Technical data							
Characterization	1.1	The manufacturer		XCMG			
	1.2	Model		XVB			
	1.2a	Configuration No.		40-QL8-G	45-QL8-G	50-QL8-G	50-QLJ8-G
	1.3	Power type		Lithium batteries	Lithium batteries	Lithium batteries	Lithium batteries
	1.4	Operating method		Seat type	Seat type	Seat type	Seat type
	1.5	Rated lift capacity	Q(kg)	4000	4500	5000	5000
	1.6	Load center distance	c(mm)	500	500	500	600
	1.8	Front overhang distance	x(mm)	535	535	535	560
	1.9	Wheel base	y(mm)	2050	2050	2050	2050
Weight	2.1	Deadweight (with battery)	(kg)	6300	6600	7000	7630
	2.2	Bridge full load, front/rear	(kg)	9200/1100	9930/1170	10750/1250	11230/1400
	2.3	Bridge no loaded, front/rear	(kg)	3200/3100	3180/3420	3240/3760	3370/4260
Wheel	3.1	Tire type, front/rear		Pneumatic tire/pneumatic tire	Pneumatic tire/pneumatic tire	Pneumatic tire/pneumatic tire	Pneumatic tire/pneumatic tire
	3.2	Tire size, front		8.25-15-14PR	8.25-15-14PR	300-15-18PR	300-15-18PR
	3.3	Tire size, rear		7.00-12-14PR	7.00-12-14PR	7.00-12-14PR	7.00-12-14PR
	3.5	Number of wheels, front/rear (x=sprocket)		2x/2	2x/2	2x/2	2x/2
	3.6	Track front	b10(mm)	1265	1265	1169	1169
	3.7	Track rear	b11(mm)	1190	1190	1190	1190
	3.7	Track rear	b11(mm)	1190	1190	1190	1190
Dimensions	4.1	Mast inclination, front/rear	$\alpha/\beta(^{\circ})$	6/12	6/12	6/12	6/12
	4.2	Mast retraction height	h1(mm)	2280	2280	2280	2280
	4.3	Free lift height	h2(mm)	150	150	150	155
	4.4	Lift height	h3(mm)	3000	3000	3000	3000
	4.5	Max. height during operation (with load backrest)	h4(mm)	4320	4320	4320	4400
	4.7	Height of overhead guard	h6(mm)	2400	2400	2400	2400
	4.8	Seat SIP point height, to the floor	h7(mm)	1400	1400	1400	1400
	4.12	Traction pin height	h10(mm)	530	530	530	530
	4.19	Overall length (with forks)	l1(mm)	4135	4135	4135	4370
	4.20	Overall length (without forks)	l2(mm)	3065	3065	3065	3150
	4.21	Overall width	b1(mm)	1500	1500	1500	1500
	4.22	Fork dimensions (thickness/width/length)	s/e/l(mm)	50/150/1070	50/150/1070	50/150/1070	55/150/1220
	4.23	Fork carriage, ISO2328		3A	3A	3A	4A
	4.24	Width of forks carriage	b3(mm)	1380	1380	1380	1380
	4.31	Ground clearance at mast, full load	m1(mm)	180	180	180	180
	4.32	Ground clearance at wheel base center, full load	m2(mm)	180	180	180	180
	4.33	Right-angle stacking aisle width, pallet 1,000 x 1,200 placement across forks	Ast(mm)	4435	4435	4435	4510
	4.34	Right-angle stacking aisle width, pallet 800 x 1,200 placement along the forks	Ast(mm)	4635	4635	4635	4710
	4.35	Outside turning radius	Wa	2700	2700	2700	2750
Performance	5.1	Travel speed, Full/no load	(km/h)	21/23	21/23	21/23	21/23
	5.2	Hoisting speed, Full/no load	(m/s)	0.4/0.46	0.39/0.46	0.38/0.46	0.38/0.46
	5.3	Descent speed, Full/no load	(m/s)	0.45/0.5	0.45/0.5	0.45/0.5	0.45/0.5
	5.6	Max. traction, Full	(N)	27000	27000	27000	27000
	5.8	Max. grade ability, Full/no load	(%)	25/25	23/25	21/25	20/25
	5.9	Acceleration time (10 meters) , Full/no load	(s)	4.1/4	4.1/4	4.1/4	4.1/4
	5.10	Service brake/parking brake		Hydraulic/mechanical	Hydraulic/mechanical	Hydraulic/mechanical	Hydraulic/mechanical
Drive	6.1	Traction motor power, S2-60min working system	(kW)	17	17	17	17
	6.2	Lift motor power, S3-15% working system	(kW)	29	29	29	29
	6.4	Battery capacity	(V/Ah)	309/150	309/150	309/150	309/150
	6.5	Battery weight ( $\pm 5\%$ )	(kg)	490	490	490	490
Others	7.1	Controller type		IGBT/AC	IGBT/AC	IGBT/AC	IGBT/AC
	7.2	Working pressure	(Mpa)	17	17	18.5	18.5

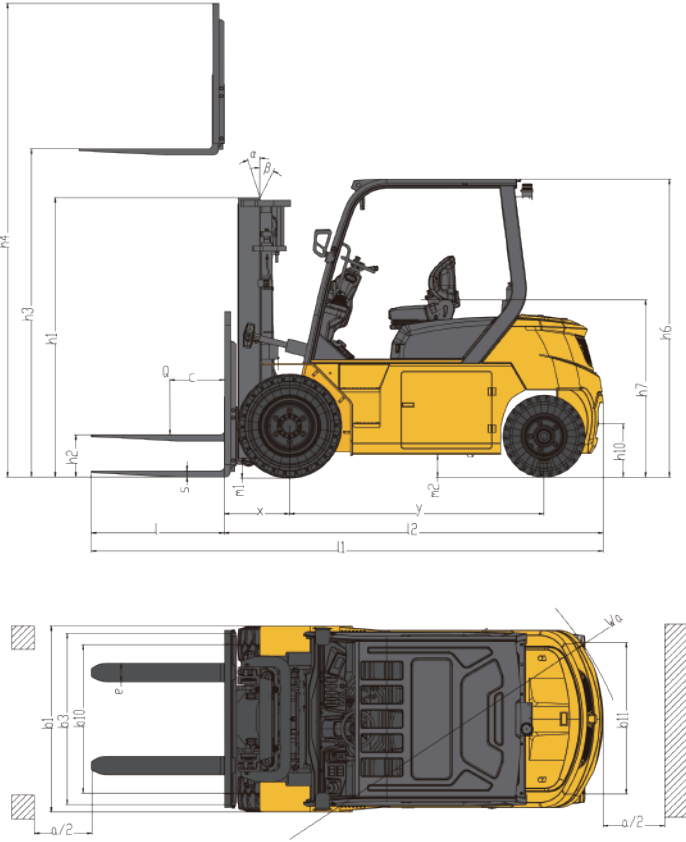
With the advancement of technology, product structures, parameters, etc. will be continuously improved without further notice. In case of discrepancy between the sample information and the substance, the substance shall prevail.

## Load curve diagram



Note:  
The vertical axis shows the load capacity and the horizontal axis shows the load center. The load center is calculated from the front of the forks. The base point of a standard load is the center of a cube with a load side length of 1,200 mm. When the mast is tilted forward, non-standard forks are used, or loads exceeding the normal width are loaded, the load capacity will be reduced. By means of the load curve diagram, the load capacity of a standard mast at various load centers can be readily understood.

## Structure diagram







Mast parameters

Basic mast with wide view field

Mast model	Max. lift height (mm)	Full height of mast (forks on the ground, vertical mast) (mm)		Free lift height (with load backrest) (mm)		Max. lift height (with load backrest)(mm)		Mast inclination α/β(°)	
		4/4.5/5t	5t(J)	4/4.5/5t	5t(J)	4/4.5/5t	5t(J)	4/4.5/5t	5t(J)
M250	2500	2030	2030	150	155	3820	3900	6/12	6/12
M300	3000	2280	2280	150	155	4320	4400	6/12	6/12
M330	3300	2430	2430	150	155	4620	4700	6/12	6/12
M350	3500	2530	2530	150	155	4820	4900	6/12	6/12
M375	3750	2655	2655	150	155	5070	5150	6/12	6/12
M400	4000	2830	2830	150	155	5320	5400	6/12	6/12
M425	4250	2955	2955	150	155	5570	5650	6/12	6/12
M450	4500	3080	3080	150	155	5820	5900	6/12	6/12
M475	4750	3205	3205	150	155	6070	6150	6/6	6/6
M500	5000	3330	3330	150	155	6320	6400	6/6	6/6
M550	5500	3630	3630	150	155	6820	6900	6/6	6/6
M600	6000	3880	3880	150	155	7320	7400	6/6	6/6

Wide view field two-stage full free mast

Mast model	Max. lift height (mm)	Full height of mast (forks on the ground, vertical mast) (mm)		Free lift height (with load backrest) (mm)		Max. lift height (with load backrest)(mm)		Mast inclination α/β(°)	
		4/4.5/5t	5t(J)	4/4.5/5t	5t(J)	4/4.5/5t	5t(J)	4/4.5/5t	5t(J)
F250	2500	2030	2030	750	680	3820	3900	6/12	6/12
F300	3000	2280	2280	1000	930	4320	4400	6/12	6/12
F330	3300	2430	2430	1150	1080	4620	4700	6/12	6/12
F350	3500	2530	2530	1250	1180	4820	4900	6/12	6/12
F375	3750	2655	2655	1375	1305	5070	5150	6/12	6/12
F400	4000	2780	2780	1500	1430	5320	5400	6/12	6/12

4/4.5/5t: the free lift height increases by 535mm without load backrest; 5t(J): the free lift height increases by 505mm without load backrest.

Wide view field three-stage full free mast

Mast model	Max. lift height (mm)	Full height of mast (forks on the ground, vertical mast) (mm)		Free lift height (with load backrest) (mm)		Max. lift height (with load backrest)(mm)		Mast inclination α/β(°)	
		4/4.5/5t	5t(J)	4/4.5/5t	5t(J)	4/4.5/5t	5t(J)	4/4.5/5t	5t(J)
T360	3600	2030	2030	750	680	4890	4965	6/6	6/6
T400	4000	2170	2170	890	820	5310	8385	6/6	6/6
T435	4350	2280	2280	1000	930	5655	5730	6/6	6/6
T450	4500	2330	2330	1050	980	5810	5885	6/6	6/6
T470	4700	2395	2395	1115	1045	6010	6085	6/6	6/6
T480	4800	2430	2430	1150	1080	6110	6185	6/6	6/6
T500	5000	2530	2530	1250	1180	6305	6380	6/6	6/6
T540	5400	2665	2665	1385	1315	6710	6785	6/6	6/6
T600	6000	2900	2900	1620	1550	7310	7385	6/6	6/6
T650	6500	3075	3075	1795	1725	7810	7885	6/6	6/6
T700	7000	3265	3265	1985	1915	8340	8415	6/6	6/6

4/4.5/5t: the free lift height increases by 535mm without load backrest; 5t(J): the free lift height increases by 505mm without load backrest.

Loading capacity of two-stage mast : 4t, 4.5t, 5t, 5t (J)

Mast model	Max. lift height (mm)	Front wheel type	Loading capacity of the whole vehicle (kg) (4t/4.5t/5t: 500mm load center, 5t(J)/6t/7t: 600mm load center)			
			4t	4.5t	5t	5t(J)
M250/F250	2500	Standard	4000	4500	5000	5000
M300/F300	3000	Standard	4000	4500	5000	5000
M330/F330	3300	Standard	4000	4500	5000	5000
M350/F350	3500	Standard	4000	4500	5000	5000
M375/F375	3750	Standard	4000	4500	5000	5000
M400/F400	4000	Standard	4000	4500	5000	5000
M425	4250	Standard	4000	4500	5000	5000
M450	4500	Standard	4000	4500	5000	5000
M475	4750	Standard	3850	4350	4800	4900
		Dual tires	4000	4450	4950	5000
M500	5000	Standard	3800	4200	4700	4800
		Dual tires	3900	4350	4850	4950
M550	5500	Standard	3600	3900	4400	4500
		Dual tires	3750	4200	4700	4700
M600	6000	Standard	3400	3600	4000	4000
		Dual tires	3600	3900	4300	4300

Loading capacity of three-stage mast: 4t, 4.5t, 5t, 5t (J)

Mast model	Max. lift height (mm)	Front wheel type	Loading capacity of the whole vehicle (kg) (4t/4.5t/5t: 500mm load center, 5t(J)/6t/7t: 600mm load center)			
			4t	4.5t	5t	5t(J)
T360	3600	Standard	4000	4500	5000	5000
T400	4000	Standard	4000	4500	5000	5000
T435	4350	Standard	4000	4500	5000	5000
T450	4500	Standard	3900	4400	4800	4800
		Dual tires	4000	4500	5000	5000
T470	4700	Standard	3800	4250	4700	4700
		Dual tires	3900	4400	4900	4900
T480	4800	Standard	3750	4200	4650	4650
		Dual tires	3850	4350	4900	4900
T500	5000	Standard	3700	4100	4500	4500
		Dual tires	3800	4300	4800	4800
T540	5400	Standard	3500	3800	4200	4350
		Dual tires	3600	4100	4500	4600
T600	6000	Standard	3300	3500	3900	3900
		Dual tires	3450	3850	4200	4200
T650	6500	Standard	3000	3300	3600	3600
		Dual tires	3200	3700	4000	4000
T700	7000	Standard	2500	2900	3300	3300
		Dual tires	2800	3300	3700	3700

Option information

Battery and charger option table (lithium)

Voltage/capacity	309V150Ah	309V173Ah	309V202Ah	309V228Ah	309V230Ah	309V245.5Ah
4t-5t	●	○	○	○	○	○
Charger standard	750V/100A	750V/100A	750V/100A	750V/100A	750V/100A	750V/100A
Optional charger	750V/200A	750V/200A	750V/200A	750V/200A	750V/200A	750V/200A

Note: ● is standard, ○ is optional.

Option table

Basic function options	
Pneumatic tires	●
Dual front tires	○
Eco-friendly solid tire	○
Ordinary solid tire	○
M300 Mast	●
Other mast <sup>(1)</sup>	○
Standard forks <sup>(2)</sup>	●
Non-standard forks	○
Forklift attachment	○
Lithium batteries of all sizes	○
Charger <sup>(3)</sup>	●

Hydraulic function options	
Two multi-way valve	●
Three multi-way valve	○
Four multi-way valve	○
Five multi-way valve	○
Metric thread hydraulic system	●

Comfort function options	
End cushioning function for mast lowering	●
End cushioning function for mast raising	○
Electric fan	○
Steering wheel triggered steering function	○
Synchronized steering function	○
Automatic deceleration function for turning	○

Cab and windshield options	
Integral cab (with fan + wiper)	○
Integral cab + refrigeration air conditioner	○
Integral cab + heater	○
Integral cab + refrigeration air conditioner + heater	○
Front windshield (including wiper)	○
Rear windshield	○
Top windshield	○

Safety function options	
Activation by card	●
Full OPS function (including down OPS)	●
Multi-way valve with overload protection	○
Embedded shock-absorbing seat (including seat switch)	●
Embedded shock-absorbing seat (including seat switch + belt lock)	○
LED beacon lamp	●
LED rotating warning light	○
LED rotating beeping warning light	○
Blue spotlight/red spotlight	○
Blue bar marker lamp/red bar marker lamp	○
Reversing radar	○
Reversing camera (with radar)	○
Reversing voice horn	○
Center rearview mirror	●
Left and right rearview mirrors	○
Left and right rearview mirrors + center rearview mirror	○
1kg fire extinguisher (dry powder)	○
2kg fire extinguisher (carbon dioxide)	○
3kg/4kg fire extinguisher	○
Speeding alarm (8km/h or 10km/h)	○

Other options	
Non-universal key	●
Universal key	○
USB interface	●
Overhead guard (with front guard)	○
XCMG vehicle network	●
Steering cylinder casing	○
Lithium battery liquid cooling	●
Lithium battery low-temperature heating function	○

Note: ●standard, ○optional

(1)For other mast information, please refer to the mast parameter table.;

(2) For standard forks specification, please refer to the technical parameter table.;

(3)For charger specification, please refer to the charger parameter table.;